



Aluminium Mechanical Lugs – Dual

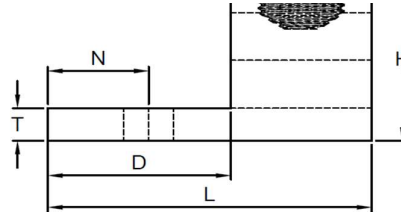
■ Single conductor-Single Hole

Features

- Manufactured From High Strength Aluminium Alloy
- Electro Tin-plated for low contact resistance
- Dual-Rated

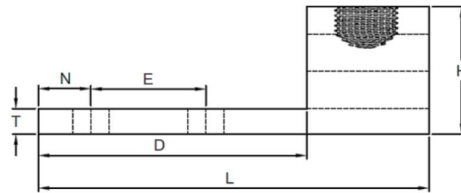
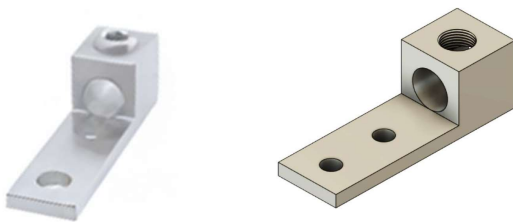
Benefits

- Suitable with use of aluminium and copper conductor
- Ensure maximum Strength and durability
- Ensures a safe and reliable connection



CAT. NO.	WIRE RANGE		STUD HOLE SIZE	DIMENSIONS (All Dimensions are in Inches)					
	MIN.	MAX.		Tang Length [D]	Tang Thickness [T]	Length [L]	Height [H]	Width [W]	Mtg. Hole to Tang End Spacing [N]
AMC-6	14 AWG	6 AWG	1/4	0.63	0.10	1.16	0.56	0.50	0.30
AMC-4	14 AWG	4 AWG	1/4	0.63	0.10	1.16	0.56	0.50	0.30
AMC-2	14 AWG	2 AWG	1/4	0.63	0.10	1.16	0.56	0.50	0.30
AMC-1/0	14 AWG	1/0 AWG	1/4	0.81	0.19	1.50	0.80	0.63	0.45
AMC-2/0	14 AWG	2/0 AWG	1/4	0.81	0.19	1.50	0.80	0.63	0.45
AMC-3/0	6 AWG	3/0 AWG	1/4	0.81	0.19	1.50	0.80	0.70	0.45
AMC-4/0	6 AWG	4/0 AWG	5/16	0.94	0.25	2.00	1.20	1.00	0.50
AMC-250	6 AWG	250 MCM	5/16	0.94	0.25	2.00	1.20	1.00	0.50
AMC-300	6 AWG	300 MCM	5/16	0.94	0.25	2.00	1.20	1.00	0.50
AMC-350	6 AWG	350 MCM	5/16	0.94	0.25	2.00	1.20	1.13	0.50
AMC-500	4 AWG	500 MCM	3/8	1.72	0.44	3.20	1.58	1.50	0.88
AMC-600	2 AWG	600 MCM	3/8	1.72	0.44	3.20	1.58	1.50	0.88
AMC-800	300 MCM	800 MCM	1/2	1.69	0.50	3.50	1.95	1.75	0.88
AMC-1000	500 MCM	1000 MCM	1/2	1.69	0.50	3.50	1.95	1.75	0.88

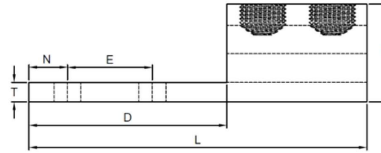
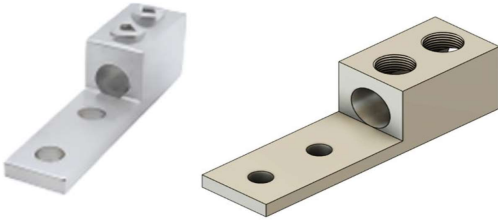
■ Single conductor-Double Hole



CAT. NO.	WIRE RANGE		STUD HOLE SIZE	DIMENSIONS (All Dimensions are in Inches)						
	MIN.	MAX.		Tang Length [D]	Tang Thickness [T]	Length [L]	Height [H]	Width [W]	Mtg. Hole to Tang End Spacing [N]	Mtg. Hole to Hole Spacing [E]
AMC-4/0-12	6 AWG	4/0 MCM	1/2	3.09	0.31	4.31	1.20	1.00	0.63	1.75
AMC-250-12	6 AWG	250 MCM	1/2	3.09	0.31	4.31	1.20	1.00	0.63	1.75
AMC-300-12	6 AWG	300 MCM	1/2	3.09	0.31	4.31	1.20	1.00	0.63	1.75
AMC-350-12	6 AWG	350 MCM	1/2	3.09	0.31	4.31	1.20	1.13	0.63	1.75
AMC-500-12	4 AWG	500 MCM	1/2	3.22	0.44	4.69	1.58	1.50	0.63	1.75
AMC-600-12	2 AWG	600 MCM	1/2	3.22	0.44	4.69	1.58	1.50	0.63	1.75
AMC-800-12	300 MCM	800 MCM	1/2	3.03	0.50	4.75	1.95	1.75	0.63	1.75
AAM-1000-12	500 MCM	1000 MCM	1/2	3.03	0.50	4.75	1.95	1.75	0.63	1.75

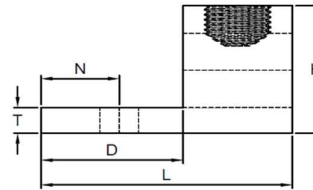
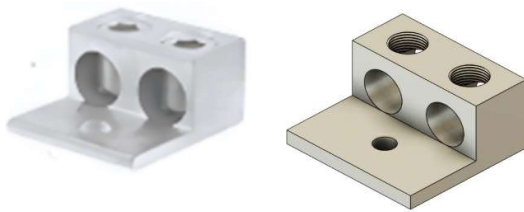


■ Conductor -Double Hole Single



CAT. NO.	WIRE RANGE		STUD HOLE SIZE	DIMENSIONS (All Dimensions are in Inches)						
	MIN.	MAX.		Tang Length [D]	Tang Thickness [T]	Length [L]	Height [H]	Width [W]	Mtg. Hole to Tang End Spacing [N]	Mtg. Hole to Hole Spacing [E]
AMC-300-12D	6 AWG	300 MCM	1/2	3.25	0.38	5.50	1.20	1.00	0.63	1.75
AMC-350-12D	6 AWG	350 MCM	1/2	3.25	0.38	5.50	1.20	1.13	0.63	1.75
AMC-500-12D	4 AWG	500 MCM	1/2	3.25	0.38	5.50	1.58	1.50	0.63	1.75
AMC-600-12D	2 AWG	600 MCM	1/2	3.25	0.38	5.50	1.58	1.50	0.63	1.75
AMC-800-12D	300 MCM	800 MCM	1/2	3.63	0.50	6.19	1.95	1.75	0.63	1.75
AM-1000-12D	500 MCM	1000 MCM	1/2	3.63	0.50	6.19	1.95	1.75	0.63	1.75

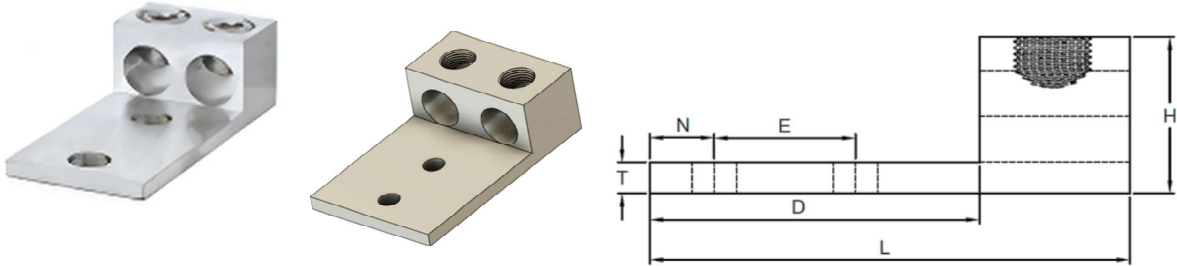
■ Double Conductor-Single Hole



CAT. NO.	WIRE RANGE		STUD HOLE SIZE	DIMENSIONS (All Dimensions are in Inches)					
	MIN.	MAX.		Tang Length [D]	Tang Thickness [T]	Length [L]	Height [H]	Width [W]	Mtg. Hole to Tang End Spacing [N]
AMC-2-21	14 AWG	2 AWG	1/4	0.63	0.10	1.16	0.56	1.00	0.30
AMC-1/0-21	14 AWG	1/0 AWG	1/4	0.81	0.19	1.50	0.80	1.25	0.45
AMC-2/0-21	14 AWG	2/0 AWG	1/4	0.81	0.19	1.50	0.80	1.25	0.45
AMC-3/0-21	6 AWG	3/0 AWG	1/4	0.81	0.19	1.50	0.80	1.40	0.45
AMC-4/0-21	6 AWG	4/0 AWG	3/8	1.50	0.25	2.56	1.20	1.66	0.50
AMC-250-21	6 AWG	250 MCM	3/8	1.50	0.25	2.56	1.20	1.66	0.50
AMC-300-21	6 AWG	300 MCM	3/8	1.50	0.25	2.56	1.20	1.66	0.50
AMC-350-21	6 AWG	350 MCM	3/8	1.50	0.25	2.56	1.20	2.31	0.50
AMC-500-21	4 AWG	500 MCM	1/2	1.72	0.44	3.20	1.58	2.41	0.88
AMC-600-21	2 AWG	600 MCM	1/2	1.72	0.44	3.20	1.58	2.41	0.88
AMC-800-21	300 MCM	800 MCM	5/8	1.69	0.50	3.50	1.95	3.19	0.88
AMC-1000-21	500 MCM	1000 MCM	5/8	1.69	0.50	3.50	1.95	3.50	0.88

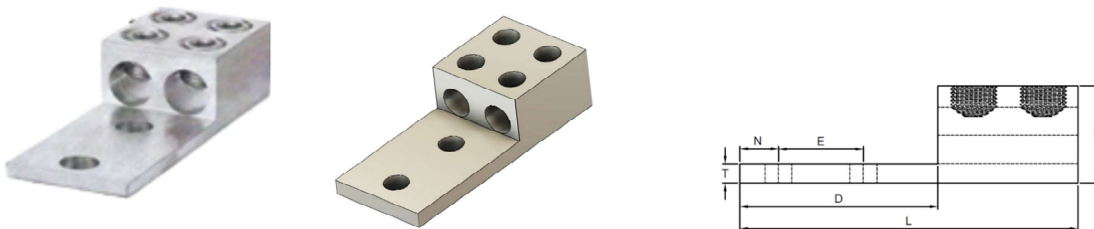


■ Single Conductor-Double Hole



CAT. NO.	WIRE RANGE		STUD HOLE SIZE	DIMENSIONS (All Dimensions are in Inches)						
	MIN.	MAX.		Tang Length [D]	Tang Thickness [T]	Length [L]	Height [H]	Width [W]	Mtg. Hole to Tang End Spacing [N]	Mtg. Hole to Hole Spacing [E]
AMC-4/0-22	6 AWG	4/0 AWG	1/2	3.09	0.31	4.31	1.20	1.66	0.63	1.75
AMC-250-22	6 AWG	250 MCM	1/2	3.09	0.31	4.31	1.20	1.66	0.63	1.75
AMC-300-22	6 AWG	300 MCM	1/2	3.09	0.31	4.31	1.20	1.66	0.63	1.75
AMC-350-22	6 AWG	350 MCM	1/2	3.09	0.31	4.31	1.20	2.31	0.63	1.75
AMC-500-22	4 AWG	500 MCM	1/2	3.22	0.44	4.69	1.58	2.41	0.63	1.75
AMC-600-22	2 AWG	600 MCM	1/2	3.22	0.44	4.69	1.58	2.41	0.63	1.75
AMC-800-22	300 MCM	800 MCM	1/2	3.03	0.50	4.75	1.95	3.19	0.63	1.75
AMC-1000-22	500 MCM	1000 MCM	1/2	3.03	0.50	4.75	1.95	3.50	0.63	1.75

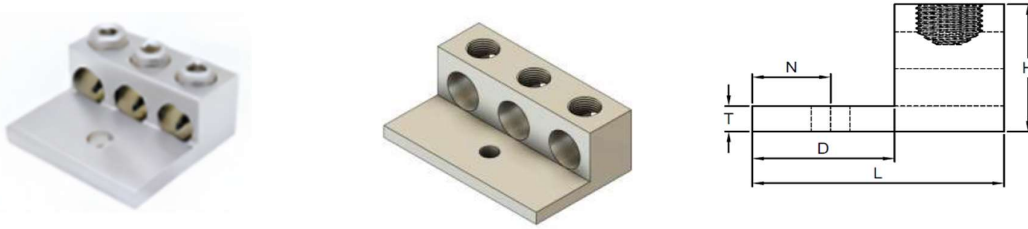
■ Double Conductor - Double hole



CAT. NO.	WIRE RANGE		STUD HOLE SIZE	DIMENSIONS (All Dimensions are in Inches)						
	MIN.	MAX.		Tang Length [D]	Tang Thickness [T]	Length [L]	Height [H]	Width [W]	Mtg. Hole to Tang End Spacing [N]	Mtg. Hole to Hole Spacing [E]
AMC-300-22D	6 AWG	300 MCM	1/2	3.25	0.38	5.50	1.20	1.66	0.63	1.75
AMC-350-22D	6 AWG	350 MCM	1/2	3.25	0.38	5.50	1.20	2.31	0.63	1.75
AMC-500-22D	4 AWG	500 MCM	1/2	3.25	0.38	5.50	1.58	2.41	0.63	1.75
AMC-600-22D	2 AWG	600 MCM	1/2	3.25	0.38	5.50	1.58	2.41	0.63	1.75
AMC-800-22D	300 MCM	800 MCM	1/2	3.63	0.50	6.19	1.95	3.19	0.63	1.75
AMC-1000-22D	500 MCM	1000 MCM	1/2	3.63	0.50	6.19	1.95	3.50	0.63	1.75

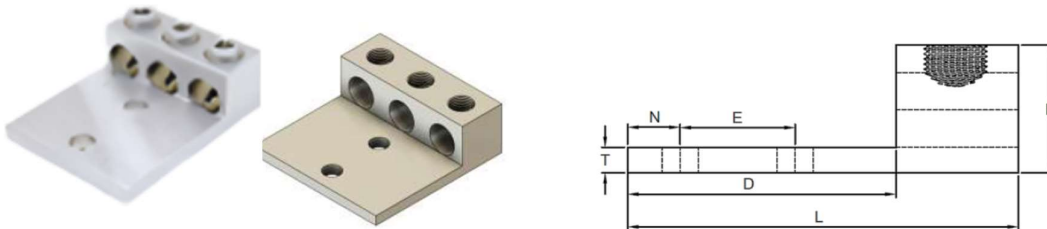


■ Three Conductor Single Hole



CAT. NO.	WIRE RANGE		STUD HOLE SIZE	DIMENSIONS (All Dimensions are in Inches)					
	MIN.	MAX.		Tang Length [D]	Tang Thickness [T]	Length [L]	Height [H]	Width [W]	Mtg. Hole to Tang End Spacing [N]
AMC-2-31	14 AWG	2 AWG	1/4	0.63	0.10	1.16	0.56	1.31	0.25
AMC-1/0-31	14 AWG	1/0 AWG	1/4	0.81	0.19	1.50	0.92	1.65	0.45
AMC-2/0-31	14 AWG	2/0 AWG	1/4	0.81	0.19	1.50	0.92	1.89	0.45
AMC-250-31	6 AWG	250 MCM	5/16	0.94	0.25	2.00	1.14	3.00	0.47
AMC-300-31	6 AWG	300 MCM	5/16	0.94	0.25	2.00	1.14	3.00	0.45
AMC-350-31	6 AWG	350 MCM	3/8	1.03	0.25	2.25	1.27	3.39	0.52
AMC-500-31	4 AWG	500 MCM	3/8	1.50	0.31	2.80	1.58	4.53	0.88
AMC-1000-31	500 MCM	1000 MCM	1/2	1.69	0.50	3.50	1.95	5.25	0.88

■ Tripple Connector-Double Hole



CAT. NO.	WIRE RANGE		STUD HOLE SIZE	DIMENSIONS (All Dimensions are in Inches)						
	MIN.	MAX.		Tang Length [D]	Tang Thickness [T]	Length [L]	Height [H]	Width [W]	Mtg. Hole to Tang End Spacing [N]	Mtg. Hole to Hole Spacing [E]
AMC-2-32	14 AWG	2 AWG	5/16	1.63	0.19	2.19	0.62	1.59	0.34	0.88
AMC-1/0-32	14 AWG	1/0 AWG	3/8	2.09	0.25	2.91	0.88	1.95	0.34	1.00
AMC-2/0-32	14 AWG	2/0 AWG	1/2	3.00	0.31	3.88	1.13	1.95	0.63	1.75
AMC-3/0-32	6 AWG	3/0 AWG	1/2	3.00	0.31	3.88	1.13	2.81	0.63	1.75
AMC-250-32	6 AWG	250 MCM	1/2	3.00	0.31	3.88	1.13	2.81	0.63	1.75
AMC-350-32	6 AWG	350 MCM	1/2	3.09	0.31	4.31	1.38	3.52	0.63	1.75
AMC-500-32	4 AWG	500 MCM	1/2	3.22	0.44	4.69	1.57	3.75	0.63	1.75
AMC-600-32	2 AWG	600 MCM	1/2	3.22	0.44	4.69	1.57	4.50	0.63	1.75
AMC-800-32	300 MCM	800 MCM	1/2	3.03	0.50	4.75	1.95	4.50	0.63	1.75
AMC-1000-32	500 MCM	1000 MCM	1/2	3.03	0.50	4.75	1.95	4.50	0.63	1.75